



## Automation Highway

- ✓ Move, copy, delete and send files
- ✓ Database communication
- ✓ Process and manipulate images
- ✓ XMP routing and manipulation
- ✓ Process files in 3rd party applications
- ✓ PDF Split & Merge functions

FileTrain is a powerful tool for automating any type of workflow. Besides copy, move, delete, FTP upload/download and email functions you will enjoy features like image processing, XMP-routing and database communication. FileTrain opens up for very advanced workflows that saves days of manual labour.

### Automation

FileTrain is all about automation, it doesn't really matter what type of automation you are looking for, FileTrain can be configured to handle most tasks!

### Receiving files

Automatically get files from FTP servers, email addresses or file servers. Once downloaded FileTrain can sort them based upon literally any criteria you can think of, even on metadata inside files.

### Sending files

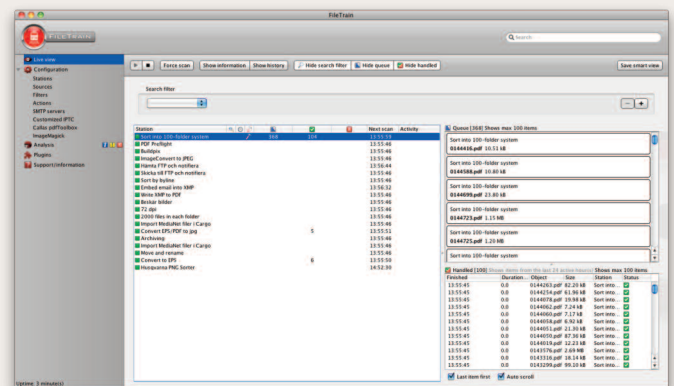
Distribute files automatically to several external locations at once via FTP or email. FileTrain will of course also let you copy or move files to other destinations.

### Metadata

FileTrain can read and write metadata such as XMP and IPTC data. This can be used to monitor an e-mail address, download all e-mails with attachments and insert message/sender information into the actual file for further processing.

### PDF Split & Merge

Included since version 6.7 you can also split multi-page PDF files into single page files, as well as merge single page PDF files into multipage



### Image Conversion and Manipulation

Change size, resolution, colorspace or crop images. FileTrain even lets you change resolution of images without using resampling, great for standardizing and optimizing your image workflow.

### Advanced Database Module

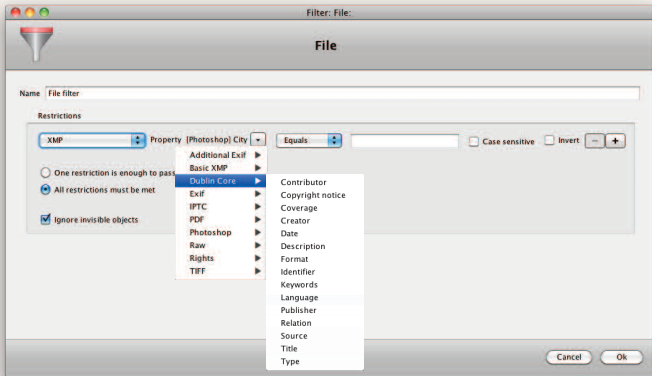
Bi-directional communication with 3rd party databases such as Oracle, Microsoft SQL Server, MySQL and FileMaker.



# FILETRAIN

Let your work flow

Download FREE  
30-day trial version!

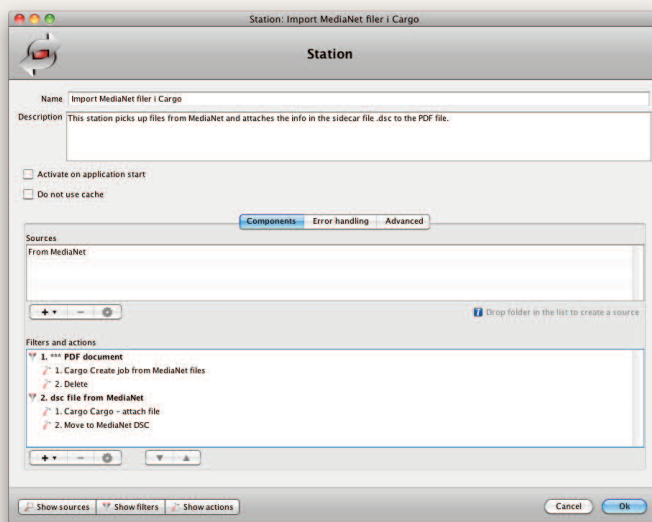


## Sources - input

No matter what the input sources are, FileTrain will monitor the activity. An input source can be a folder, a FTP server, an e-mail address or even a specific time of the day.

## Filters/Routing

Different files goes through different workflows, PDF files should be preflighted, images needs to be checked whether they comply to your standards (color space, resolution etc). This is easily done within FileTrain.



## Actions

Within the actions menu, you decide on what will happen to these files: delete, move, copy, e-mail, FTP, modify, insert/extract metadata, update a database – the possibilities are endless.

## Scheduling

Certain processes needs to run all day long, but some only needs to run once a day, or maybe at 2 AM every Sunday morning. These type of advanced scheduling is available in FileTrain 6.

## Dynamic values

FileTrain uses macros to handle dynamic values. With the help of these advanced macros files can for example be renamed following complex rules, databases can be updated, emails can be sent etc.

## Advanced processing

In FileTrain 6 you have the ability to set up advanced error handling as well as having one station handle multiple files/actions at once. This means that version 6 is even faster than earlier versions.

Contact us:  
Laidback Solutions AB  
Skolgatan 10, S-602 25 Norrköping, Sweden  
Tel: +46 11 12 75 80  
Fax: +46 11 12 75 89

E-mail: [info@laidbacksolutions.se](mailto:info@laidbacksolutions.se)

### System Requirements FileTrain 6

Java 1.6 or newer  
Mac OS 10.6 or newer  
Windows XP/Vista/7/2003/2008/2012  
Ubuntu Linux  
Min. of 4Gb of RAM

**laidback**  
[www.laidbacksolutions.com](http://www.laidbacksolutions.com)